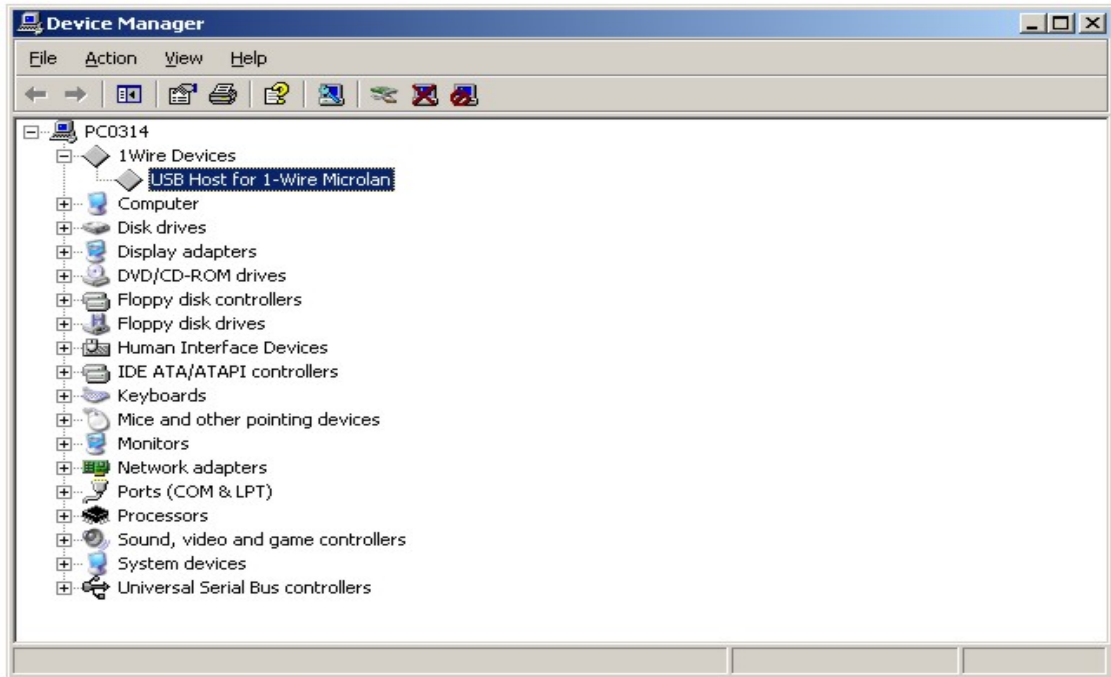
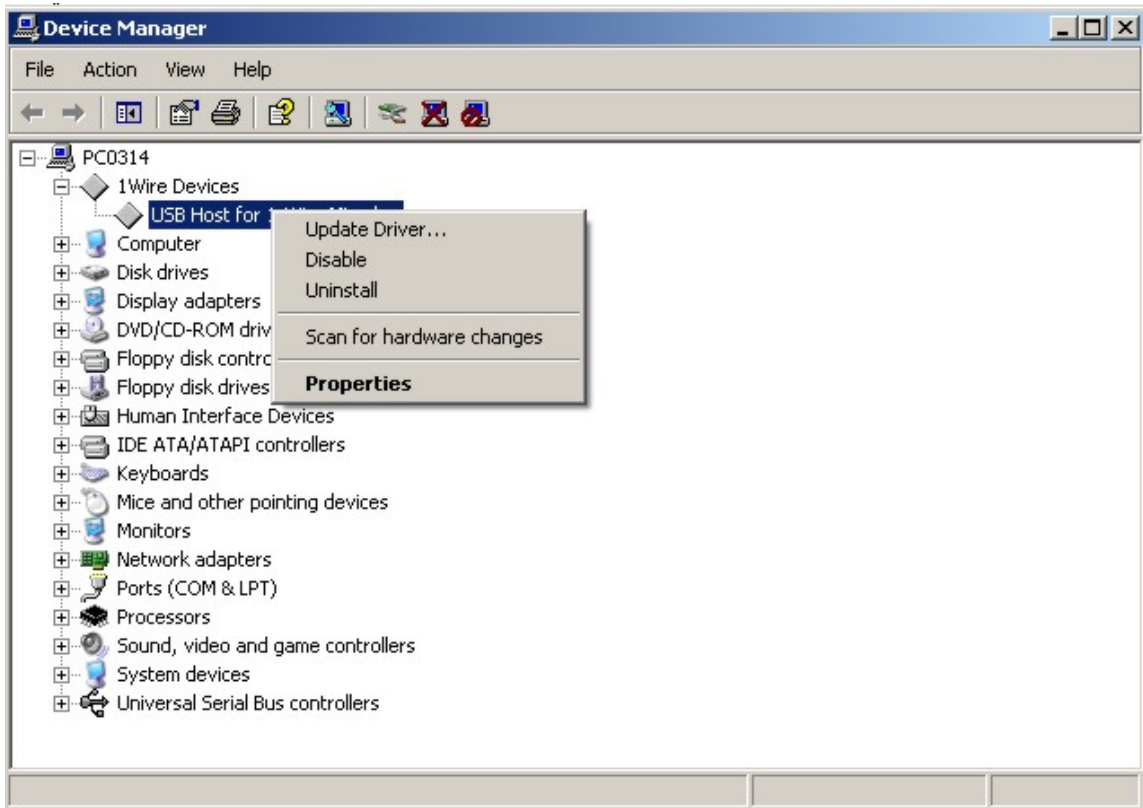


How to Correctly Install The WinMax USB Dongle

Right Click on "My Computer", Select "Properties", "Hardware"
Go to the Device Manager



Uninstall the Device



Unplug the Dongle from the USB port for 5 Seconds, than re-insert
The following screen should appear

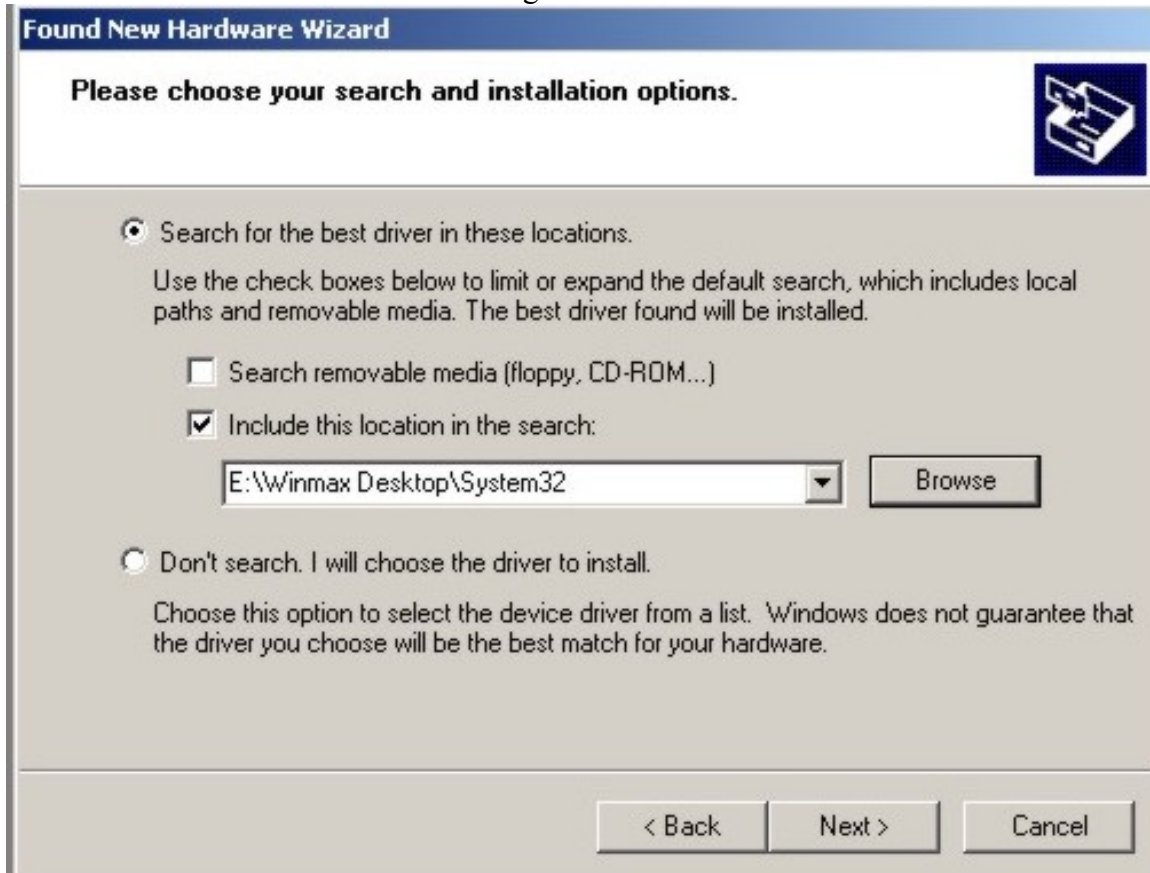
Select the Option as shown.



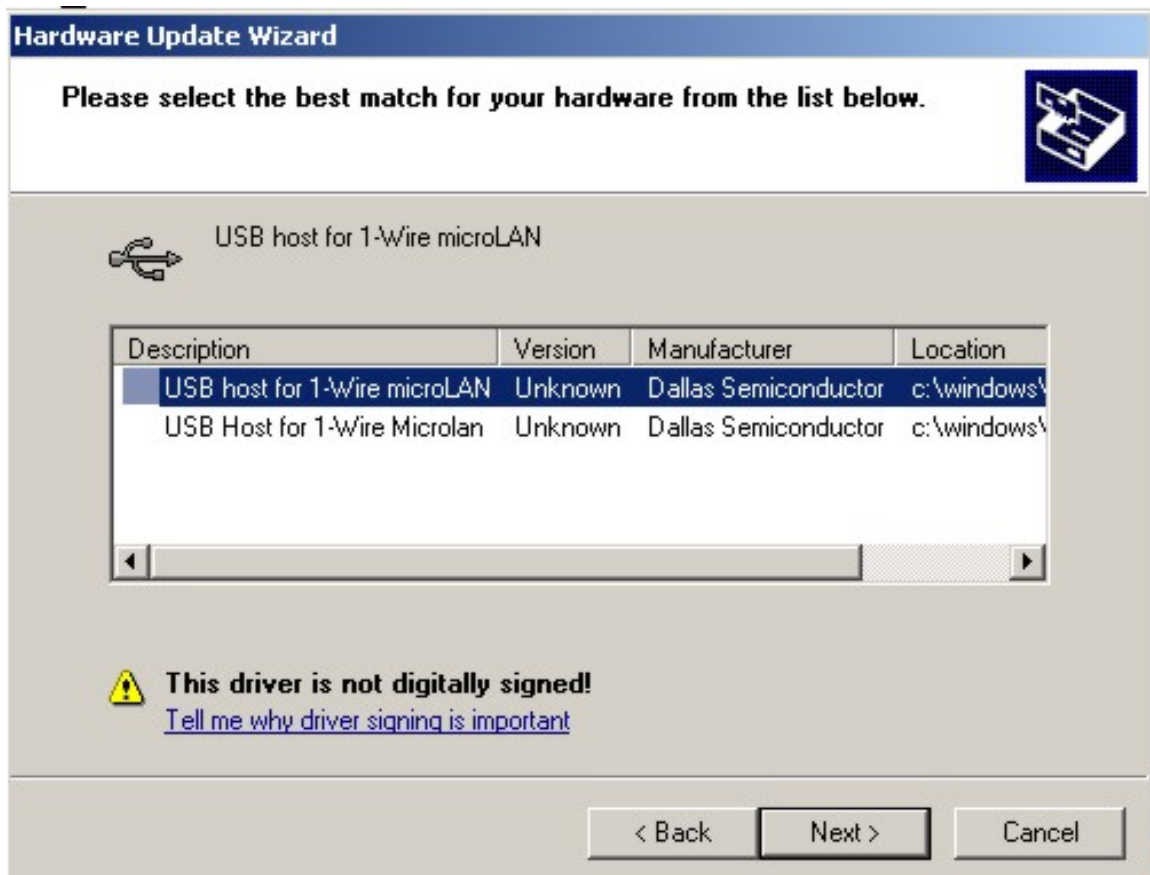
Select the Following Option



Place the WinMax CD – ROM in the drive
Find the following folder on the CD - ROM



The following screen will appear

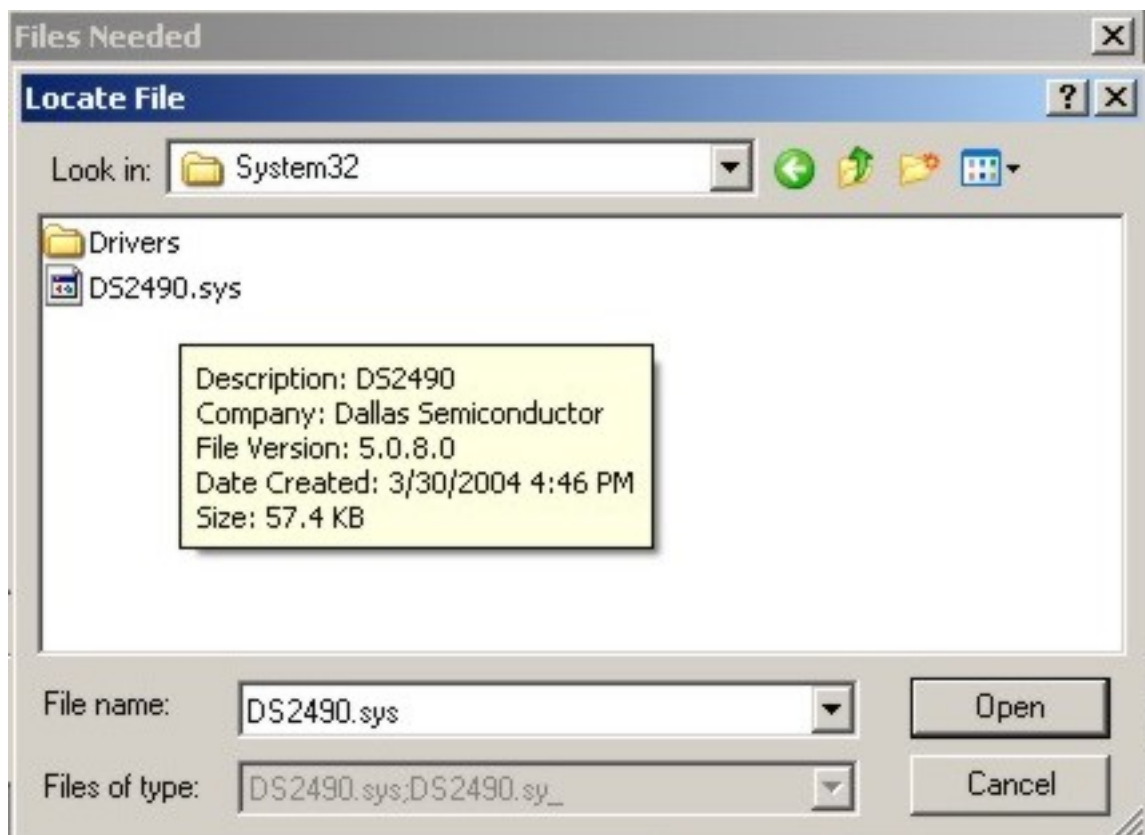


Select "Next"

You will get the following warning if you are running Windows XP,
Select "Continue Anyway"

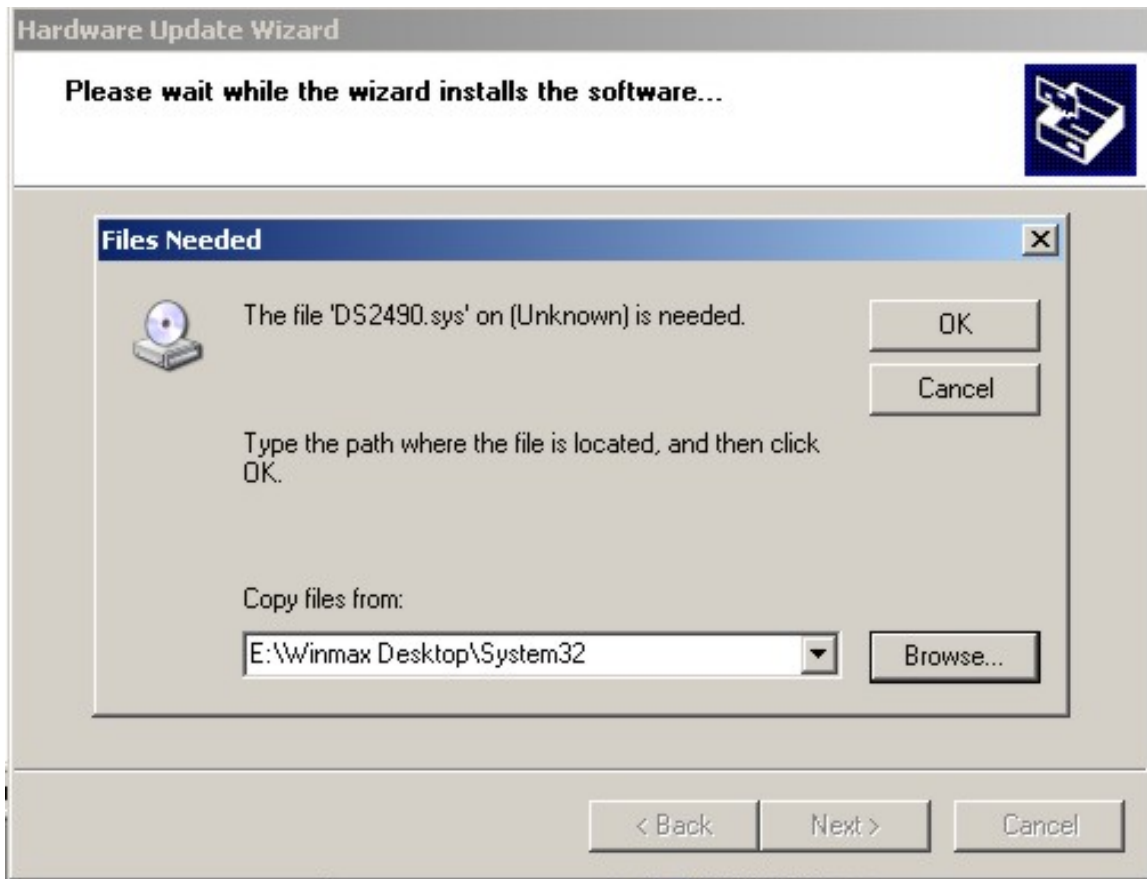


You will see the following screen



Highlight the DS2490.sys and select "Open"

Select "OK"



You should get the following screen.



Select "Finish"

WinMax should now see the dongle.

If it does not, reload the driver again